



# GISCorps Newsletter

GIS Professionals Volunteering for a Better World

August 2010

## In This Issue

- o A Message from the Core Committee
- o Deployment and Partnership News
- o URISA Announcements
- o ESRI's 30<sup>th</sup> User Conference
- o 48<sup>th</sup> URISA Annual Conference
- o Shop for GISCorps Stuff!
- o Featured Project: UNO-PLUS

## URISA

## GISCorps Partner Agencies

EWB

GSDI

MMEX

UNDP

UNHCR

UNJLC

UNOSAT

iMMAP

Volunteers for Prosperity

## Relief Agency Links

### Relief Web

*global hub for time-critical humanitarian information on Complex Emergencies and Natural Disasters*

## Data/Information Links

### Earthwatch Institute

*Earthwatch Institute is an international non-profit organization that brings science to*

## A Message from the Core Committee

As we reflect back on the past year of GISCorps activities and missions, we would like to remind you that as in previous years, GISCorps will have a presence at the [URISA](#) conference in Orlando at the end of September. We have a number of activities planned for GIS Pro 2010, and we hope you will be able to join us at this event. If you are a volunteer that has been deployed on a mission in the past year, and you would like to participate/be part of our presentations at this conference, please let us know by contacting [info@giscorps.org](mailto:info@giscorps.org).

We had a large booth area at the recent ESRI Conference (see [article](#) later in this newsletter); if you were able to join us there, we thank you for stopping by the booth and attending our session. If you were unable to make the ESRI conference, we hope to see you in Orlando.

But there is no rest for the members of the GISCorps Core Committee. Three new Partner Agencies have approached GISCorps for volunteers for their projects. We will soon be recruiting volunteers for missions with these agencies in Australia, Mexico, and Kenya, looking for volunteers specializing in disaster response, research and geo-coding, and conservation. If you are aware of any situations that could make use of GISCorps volunteers, please advise the agencies involved to contact us by completing the Partner Agency form on the GISCorps website ([www.giscorps.org](http://www.giscorps.org)).

GISCorps Core Committee,

Dianne Haley, Allen Ibaugh, Mark Salling, Shoreh Elhami, Heather Milton, Ray DeLeon

P.S. Please email [info@giscorps.org](mailto:info@giscorps.org) if you want to be removed from this list. ([back to top](#))

## Deployment and Partnership News

### Missions in Progress:

- **Mission with Ministry of Tourism – Mozambique:** The Ministry of Tourism requested the assistance of a remote sensing specialist. They had access to several Quick Bird imageries of Chimanimani National Reserve from 2005 and 2008 and are interested in having the volunteer conduct a change detection to identify changes in land use pattern. This is expected to help the reserve management team to locate the areas where more attention is required to control illegal activities currently occurring in the Reserve (e.g. gold panning). Kerry

*life for people concerned about the Earth's future.*

### Service at Sea

*Service at Sea is a ship-based technology assistance program that will begin a circumnavigation of the earth in August, 2007, with a goal to assist conservation organizations who are using GIS technology to meet goals of their communities.*

### Society for Conservation GIS

*A non-profit organization supporting individuals using GIS and science for the conservation of natural resources and cultural heritage*

### GISCorps Core Committee

Dianne Haley, Chair  
Allen Ibaugh, Vice Chair  
Shoreh Elhami, Co-founder  
Mark Salling  
Heather Milton  
Ray DeLeon

### Contact Us

<http://www.giscorps.org>

Email: [info@giscorps.org](mailto:info@giscorps.org)

Brooks, a professor at Washington State University has been recruited for this mission.

- **Mission with Geographical Resources for Development Centre (GRDC) – Nigeria:** The Geographical Resources for Development Centre (GRDC), a non profit organization in Nigeria, requested one volunteer to assist in setting up a metadata clearinghouse. The project is a result of a partnership between GISCorps and the [Global Spatial Data Infrastructure Association](#) (GSDI). The GRDC project supports the goal of GSDI "...to promote international cooperation and collaboration in support of local, national and international spatial data infrastructure developments that will allow nations to better address social, economic, and environmental issues of pressing importance." Alison Fischer of British Columbia was recruited for this mission in January 2010 and has since selected appropriate clearinghouse software and has enlisted the aid of a service provider, GeoCat, to host and maintain the clearinghouse. Read more [here](#).
- **Mission with iMMAP/WFP - North Korea:** 20 GISCorps volunteers have been recruited for a project in North Korea. The request for volunteers came from the [World Food Program](#) (WFP) and Information Management and Mining Action Program ([iMMAP](#)). Volunteers are charged with the task of digitizing 400 map sheets and will create several data layers such as: settlement points, transportation (roads, foot path, and railroads), rivers and lakes. Read more [here](#).
- **Mission with iMMAP – Chad:** Information Management and Mine Action Program ([iMMAP](#)) is assisting the Chadian Independent Electoral Commission (CENA) in Chad. The goals of this project are to geo-reference +/-10,000 polling stations for the entire country and then add attribute data such as type of polling station, mobile network operator available, accessibility, and time to reach from the sub-district center to that dataset. This dataset will be used for the preparation of the upcoming legislative elections due in September 2010. They need a GISCorps volunteer with expertise in ArcGIS Desktop and Excel spreadsheets to assist them with this project. The search resulted in selection of Guy Maurice from Belgium who was put in direct contact with iMMAP representatives. So far, he has been able to identify the location of several hundred polling places. However, in order to finalize the project more detailed information is needed. The remaining locations will be identified as soon as CENA provides the additional information.
- **Mission with FLOSSK – Albania:** This project is commissioned by Free Libre Open Source Software Kosovo (FLOSSK), a non-profit organization in Kosovo. FLOSSK requested the assistance of GISCorps volunteers in creating an accurate base map for a region in northwest of Albania known as Shkoder. This region was struck by flood in January 2010. Nine volunteers have been recruited for this project. One of the volunteers, Miguel Morgado from the UK, is the Project Manager and eight other volunteers are: Michele Morettini and Massimiliano Rossi from Italy, Takeo Shibata, Andrew Ross, Janet Vaughn, Adebayo Adepegba from the US, Doug Brown, from Mexico, and Kerice Masters from Jamaica. Read more [here](#).
- **Mission with UNOOSA/UN-SPIDER – Haiti:** In January 2010, a request for ArcGIS Server specialists came to GISCorps from the UN Office for Outer Space Affairs (UNOOSA), as implementing Office for

the UN Platform for Space-based Information for Disaster Management and Emergency Response (UN-SPIDER). The search resulted in the selection of Chris Markuson from Pueblo, Colorado who has been working with UNOOSA/UN-SPIDER representatives.

- **Mission with ICOMOS – Haiti:** International Council on Monuments and Sites ([ICOMOS](#)) is an international non-governmental organization of professionals, dedicated to the conservation of the world's historic monuments and sites. They were interested in identifying historic structures in Haiti and also assessing damages to those structures in hopes of helping the Haitians and Haitian government to preserve the important structures. Read more [here](#).
- **Mission with [South Luangwa Conservation Society](#) – Zambia:** GISCorps volunteer, Lisa Matthies, a GIS and Geography Instructor at Erie Community College in Williamsville, NY has been supporting SLCS' GIS needs since spring of 2009. Her ongoing support includes analysis of SLCS' historic and current data as well as providing custom maps on a regular basis. Read more [here](#).
- **Global Spatial Data Infrastructure (GSDI) Small Grants Program's 2010-2011 Projects:** GISCorps first participated in the review of 2005/2006 Small Grants projects in 2005 and most recently participated in the 2009/2010 projects. 2010/2011 applications are due in the fall. The 2010/2011 applications are due in the fall. The 2010/2011 efforts are spearheaded by Mark Salling, a GISCorps Core Committee member. Read about previous projects [here](#).

Read more about completed projects [here](#).

Read more about projects in progress in [here](#).

[\(back to top\)](#)

---

## URISA Announcements

### Upcoming Conferences

#### [2010 URISA/NENA Addressing Conference](#)

**Register today!**

August 16-18, 2010 – Charlotte, NC

---

#### [GIS-Pro 2010: URISA's 48th Annual Conference for GIS Professionals](#)

**Register today!**

September 28-October 1, 2010 – Orlando, FL

---

#### [URISA's 5th Caribbean GIS Conference](#)

**Abstract submissions due on or before August 20!**

December 6-10, 2010 – Trinidad

---

#### [15th Annual GIS/CAMA Technologies Conference](#)

**Abstract submissions due October 4**

February 28-March 3, 2011 – Memphis, TN

## What's New

[URISA 2010 Election Results Announced](#)

---

[URISA ESIG Awards Announced](#)

---

[Stan Meiburg to Discuss Challenges in Using GIS for Environmental Protection at GIS-Pro 2010](#)

---

[BP's Standard of Care to be Hot Topic at GIS-Pro](#)

---

[Zsolt Nagy to Lead Discussion on Advancing Geospatial Priorities at GIS-Pro 2010](#)

---

[What is Pam Sig up to today?](#)

---

[US Department of Labor announces release of Geospatial Technology Competency Model](#)

---

[May/June Issue of THE GIS PROFESSIONAL](#)

---

[GISCorps Profiled in ArcNews](#)

---

[Draft Address Standard Submitted to FGDC -updates forthcoming](#)

---

[Donate to URISA's 50/50 Fund](#)

---

[\(back to top\)](#)

---

## ESRI's 30th User Conference, San Diego, July 12-16, 2010

The 30<sup>th</sup> ESRI User Conference was held in San Diego from July 12-16, 2010. As in the past several years, GISCorps had a special exhibit in the Map Gallery where 100's of existing and new volunteers stopped by and visited with the Core Committee members and other volunteers. We had our annual presentation/meeting on Wednesday which was followed by a gathering at Rama restaurant. To see the photos taken at this event, click [here](#).

The photo album is also on GISCorps' [Facebook page](#).

[\(back to top\)](#)

---

## 48<sup>th</sup> URISA Annual Conference, Orlando, FL, September 28- October 1<sup>st</sup>, 2010

Since 2003, GISCorps has been holding several events at the URISA International Conference. We hope that you can join us in Orlando, Florida (from September 28 to October 1<sup>st</sup>). This year's events are:

**Annual Presentation** - Thursday September 30<sup>th</sup>, 9 to 10 AM – several volunteers and GISCorps Core Committee members will give an overview on

2009-2010 projects and activities.

**Annual Meeting** – the annual meeting will be held on Wednesday September 29<sup>th</sup> from noon to 2 PM.

**Poster Exhibit** - throughout the conference the work of our volunteers will be on display.

**Note: If you are a deployed GISCorps volunteer and plan to attend the GIS-Pro Conference, please let us know by sending an email to: [info@giscorps.org](mailto:info@giscorps.org).**

Check our website and FaceBook page for further updates.

[\(back to top\)](#)

---

## Shop for GISCorps Stuff!!

Do you find yourself in need of a new T-shirt, coffee mug, ball cap or tote bag? Do you want to advertise GISCorps and your association with the organization? Well, you are in luck! You can now find various GISCorps items at our online shop at: <http://www.cafepress.com/giscorps>

[\(back to top\)](#)

---

## Featured Projects:

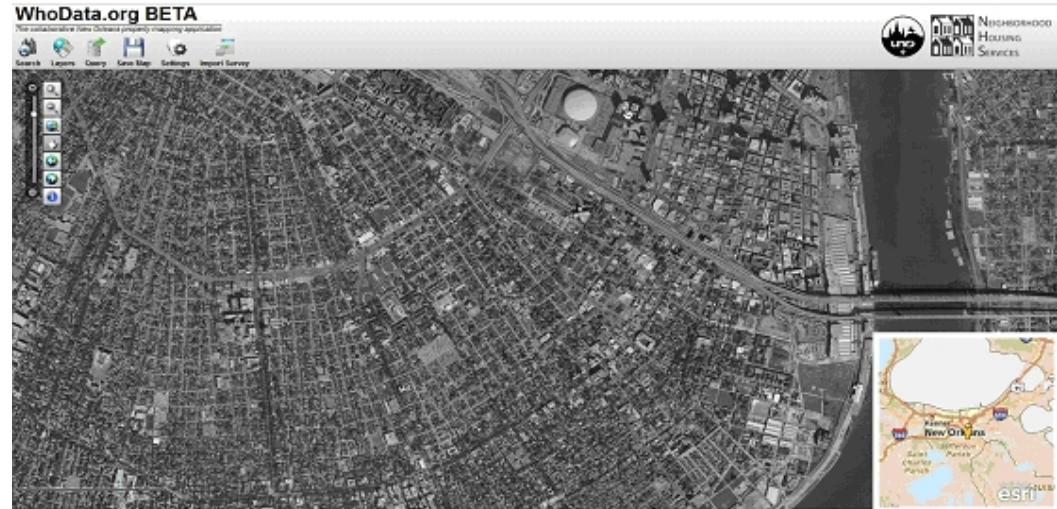
### Providing GIS Support to a Non Profit Organization in New Orleans, LA

In October 2009, Dr. Michelle Thompson, an Assistant Professor at the University of New Orleans – Department of Planning & Urban Studies (UNO-PLUS) contacted GISCorps and sought the assistance of an ArcGIS Server Programmer to develop a community-university pilot project to develop a community data information system using internet mapping services.

David Lessinger of the Neighborhood Housing Services of New Orleans (NHS); a non-profit organization in New Orleans, Louisiana, was interested in creating a dynamic web site to share data and build surveying capacity in other neighborhoods. Following a thorough search, Rafael Ferraro, a GIS Programmer with Science Application International Corporation (SAIC) in Virginia, was selected for this project and is now working with a team of experts from NHS and UNO-PLUS.

“The University of New Orleans & Neighborhood Housing Services of New Orleans Mapping Initiative” (UNMI) is a community-university partnership that initially developed to move the concept of shared data sets to integrated data systems using internet mapping system (IMS) technology. The motivation, goals and partners involved in this pilot project are explained on their [Website](#). The *UNMI* has expanded the initial goal of the pilot from a single organization to new partners (below) that will help test the IMS functionality, assist in development of training guides for future participants, establish and implement data survey/maintenance standards, and increase collaborative data sharing between multiple community based organizations

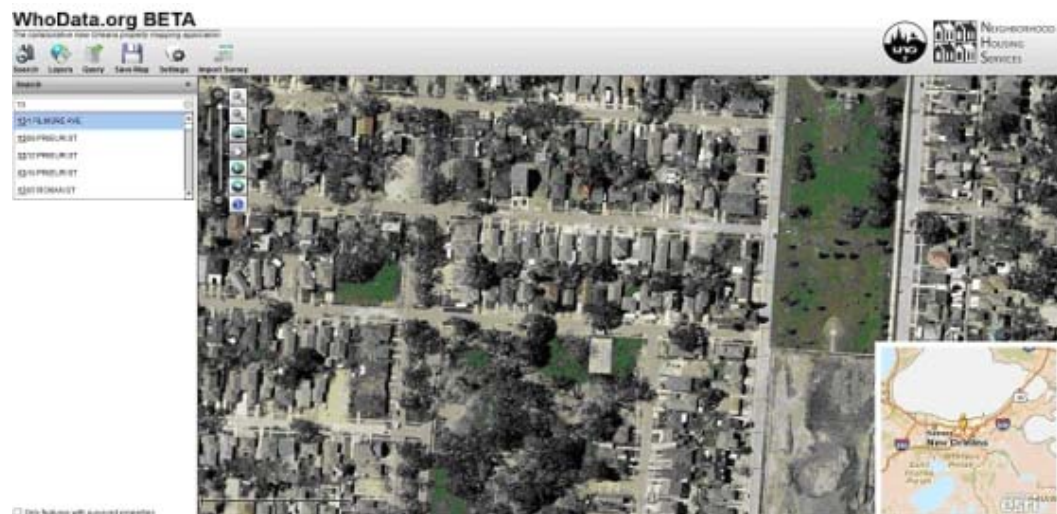
in New Orleans.



## Project Data

One of the challenges in creating an integrated site has been to obtain permissions to use organization survey data and create a data conversion methodology to standardize the neighborhood survey format without creating unintentional errors. With the exception of NHS, the project partners have been delayed in providing baseline data. However, NHS has provided time series neighborhood condition data that is now being uploaded into the IMS.

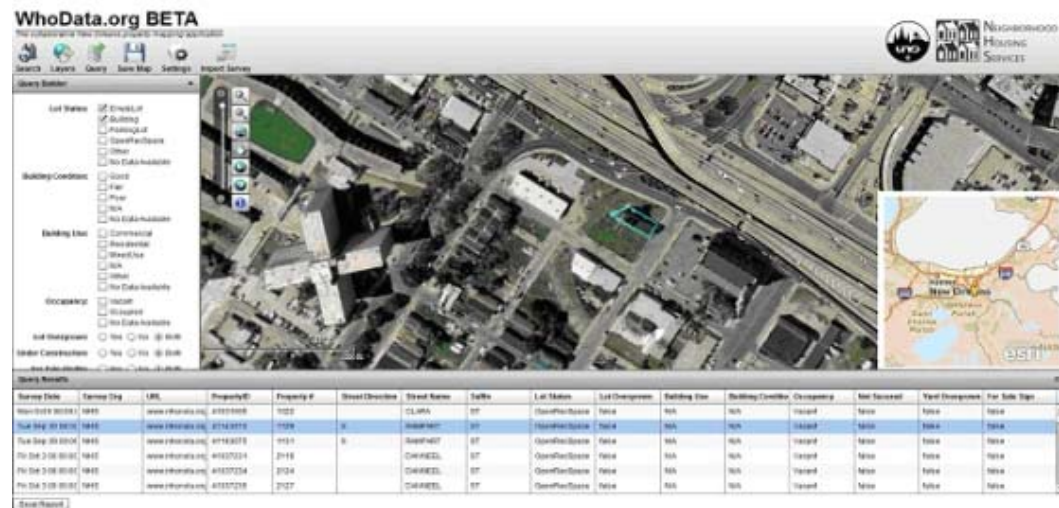
Another goal of the UNMI is to create a way to seamlessly integrate city, regional and state spatial data and use Federal Geographic Data Committee standards within the IMS. With the aid of the Regional Planning Commission, the most recent imagery obtained from a 2009 flyover is part of the baseline program data. Users will have the option of identifying properties using a street, imagery or hybrid view.



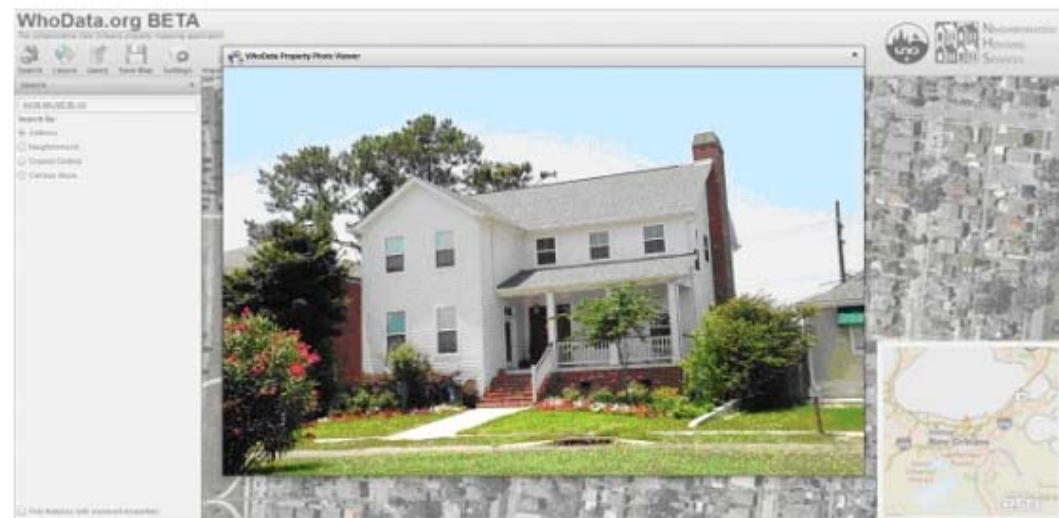
## Project and IMS Website

Crucial information about the current conditions of property – parcel-level

would inform residents, policy makers and developers does not exist for most neighborhoods. The IMS website, *Whodata.org*, will address this challenge by providing technical assistance to residents and neighborhood groups to survey and map the property in their neighborhood and give them a simple but elegant web site to use and share this information.



UNO-PLUS is conducting a study on the condition of the Louisiana Recovery Authority 'Option 1' properties. Owners of these properties received up to \$150,000 to rehabilitate and occupy the property after Hurricane Katrina. A sample of the 30,000 Option 1 properties (2,308) is in the process of evaluation. WhoData.org will house part of this dataset to test the functionality of hyperlinked images with the survey data to allow for property queries of potential blight within the City of New Orleans.



### Project Partners:

The project coordinators remain the University of New Orleans/Department of Planning & Urban studies and the Neighborhood Housing Services of New Orleans. Data sharing partners include [Broadmoor Improvement Association](#), [Jericho Road Episcopal Housing Initiative](#), and [New Orleans Neighborhood Development Collaborative](#). The [Regional Planning Commission](#) has also agreed to lend technical support and public data sources for this project.

In order to avoid the concern of having critical recovery data exposed, the WhoData.org site will have restricted access to some areas of the website. Non-profit project partners will be able to directly upload their data using a secure interface so that timely, current and self-managed data input can be maintained. Training on how to maintain a high level of quality assurance/quality control is a part of the program management strategy for existing and future data partners.



The WhoData.org website will be active in September 2010. We will announce when the live application will be available on the UNMI and GISCorps websites. While the IMS site is under construction, the URL will point back to the UNMI website located at <http://www.planning.uno.edu/UNMI/index.html>.

For questions, you can contact Dr. Thompson at: [mmthomp1@uno.edu](mailto:mmthomp1@uno.edu) and Rafael Ferraro at: [rafael.m.ferraro@gmail.com](mailto:rafael.m.ferraro@gmail.com).

[\(back to top\)](#)